

# CONSTRUCTION ECONOMICS

**ENR's 20-city average cost indexes, wages and materials prices.**  
**Historical data for ENR's 20 cities can be found at [ENR.com/economics](https://enr.com/economics)**

## Construction Cost Index

**+2.8%**

ANNUAL INFLATION RATE

**JUNE 2026**

1913=100	INDEX VALUE	MONTH	YEAR
CONSTRUCTION COST	14257.36	+0.6%	+2.8%
COMMON LABOR	26554.74	0.0%	+1.3%
WAGE \$/HR.	50.45	0.0%	+1.3%

The Construction Cost Index annual escalation rose 2.8%, while the monthly component increased 0.6%.

## Building Cost Index

**+4.1%**

ANNUAL INFLATION RATE

**JUNE 2026**

1913=100	INDEX VALUE	MONTH	YEAR
BUILDING COST	8912.59	+1.2%	+4.1%
SKILLED LABOR	12513.54	+0.2%	+2.0%
WAGE \$/HR.	69.45	+0.2%	+2.0%

The Building Cost Index was up 41% on an annual basis, while the monthly component increased 1.2%.

## Materials Cost Index

**+2.0%**

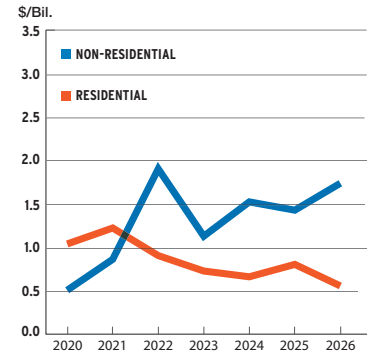
MONTHLY INFLATION RATE

**JUNE 2026**

1913=100	INDEX VALUE	MONTH	YEAR
MATERIALS COST	6720.25	+2.0%	+6.5%
CEMENT \$/TON	296.39	+0.6%	+2.4%
STEEL \$/CWT	132.12	+3.0%	+11.6%
LUMBER \$/MBF	866.58	+0.8%	+8.8%

The Materials Cost Index increased 2% in June.

**Construction starts in the New Orleans metro area are expected to rise 2.7% in 2026, to \$2.3 billion,** according to Dodge Construction Network. Dodge predicts a 21.9% increase in non-residential starts, while residential is expected to fall 31.4%. Hotel and warehouse starts are predicted to increase, while single-family starts are expected to fall.



SOURCE: DODGE CONSTRUCTION NETWORK

## ENR's Cost Indexes by City

1913=100  
1967=100  
R=REVISED

	CONSTRUCTION COST		BUILDING COST		COMMON LABOR		SKILLED LABOR		MATERIALS	
	JUN '26: 1913	% CHG. YEAR	JUN '26: 1913	% CHG. YEAR	JUN '26: 1967	% CHG. YEAR	JUN '26: 1967	% CHG. YEAR	JUN '26: 1967	% CHG. YEAR
<b>ATLANTA</b>	8756.92	+0.2	7006.19	+0.2	825.83	0.0	829.31	0.0	1579.21	+0.4
<b>BALTIMORE</b>	11301.92	+5.0	8044.06	+7.2	1236.74	0.0	1041.21	0.0	1520.49	+14.0
<b>BIRMINGHAM</b>	9276.19	+4.2	6720.48	+5.9	978.68	0.0	894.48	0.0	1366.78	+10.4
<b>BOSTON</b>	18673.99	-0.1	10763.91	+0.4	1848.09	+0.1	1700.94	+1.0	1390.68	-0.5
<b>CHICAGO</b>	22333.32	+6.8	11208.93	+0.3	2030.80	+9.2	1609.30	+1.7	1392.09	-1.4
<b>CINCINNATI</b>	12499.56	-1.6	7238.09	-3.6	1180.77	+3.4	1102.61	+6.4	1122.72	-13.3
<b>CLEVELAND</b>	14504.80	-2.0	7985.81	-2.9	1147.66	0.0	1052.09	+1.2	1222.50	-7.3
<b>DALLAS</b>	8063.44	+7.3	6747.46	+9.4	742.23	0.0	761.92	+1.4	1420.67	+14.4
<b>DENVER</b>	9478.38	+2.7	7864.13	+3.4	818.18	0.0	1077.89	+0.3	1375.46	+6.6
<b>DETROIT</b>	13908.62	+1.3	8335.17	-0.5	1125.91	+2.7	1178.73	+1.2	1056.27	-2.9
<b>KANSAS CITY</b>	14638.34	+6.2	9018.38	+11.5	1413.02	0.0	1371.10	+1.6	1416.73	+23.8
<b>LOS ANGELES</b>	15771.92	-1.3	9526.78	-0.6	1287.67	0.0	1311.05	+3.0	1447.90	-4.6
<b>MINNEAPOLIS</b>	17759.76	+6.4	9849.47	+13.5	1638.77	0.0	1529.95	+2.0	1438.44	+31.1
<b>NEW ORLEANS</b>	<b>8092.49</b>	<b>+1.3</b>	<b>6771.33</b>	<b>+1.5</b>	<b>749.82</b>	<b>0.0</b>	<b>870.91</b>	<b>0.0</b>	<b>1395.68</b>	<b>+2.6</b>
<b>NEW YORK CITY</b>	23688.53	+4.7	12846.84	+7.2	1721.88	+1.3	1638.55	+0.5	1564.81	+23.0
<b>PHILADELPHIA</b>	17011.44	+3.2	10113.96	+4.9	1733.73	+1.2	1540.29	+1.6	1451.70	+10.4
<b>PITTSBURGH</b>	13042.92	+4.3	8398.50	+7.5	1178.28	0.0	1125.45	+1.0	1187.29	+16.1
<b>ST. LOUIS</b>	15309.49	+3.0	8967.90	+4.4	1179.98	+1.2	1146.85	+1.5	1552.89	+7.5
<b>SAN FRANCISCO</b>	15736.48	+3.0	11264.42	+4.2	1076.13	0.0	1339.65	0.0	1779.05	+9.4
<b>SEATTLE</b>	15298.63	+0.4	9579.91	+9.0	1314.48	0.0	1534.92	+14.7	1492.00	+1.6

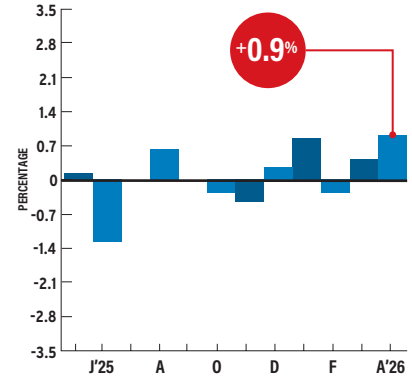
# CONSTRUCTION ECONOMICS

**Prices for PVC pipe products rose 0.9% in April after increasing 0.4% in March**, according to the Bureau of Labor Statistics' producer price index for plastic construction products, which consists largely of PVC pipe. The annual escalation reached 1.8% in April. ENR's 20-city average price for all three types of corrugated-steel pipe experienced both monthly and yearly increases in June. Monthly prices for 6-in. ductile-iron pipe decreased 2.5%, while the annual price rose 6% since June 2025.

## PRODUCER PRICE INDEX

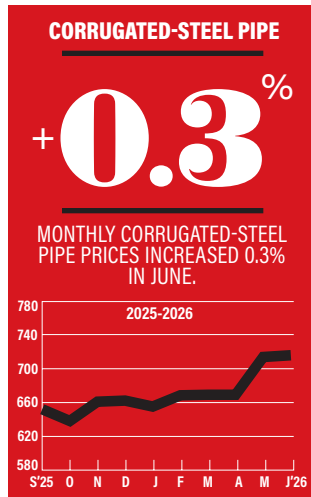
### PVC PIPE

Monthly Percent Change



SOURCE: BUREAU OF LABOR STATISTICS

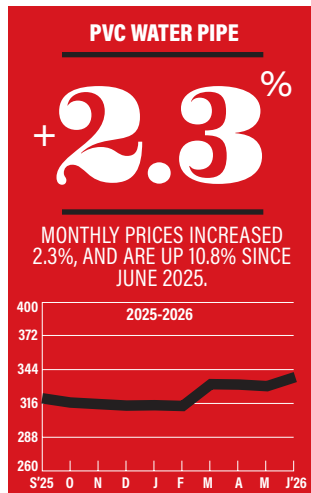
## ENR's Materials Prices For June 2026



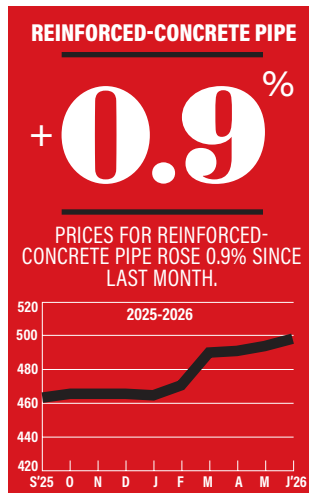
1992=100



1992=100



1992=100



1992=100

## 20-CITY AVERAGE

ITEM UNIT \$PRICE %MONTH %YEAR

### REINFORCED-CONCRETE PIPE (RCP)

12"	FT	36.68	+1.2	+7.2
24"	FT	72.21	<b>+0.9</b>	+9.6
36"	FT	146.85	-0.9	+6.9
48"	FT	235.46	-1.2	+3.7

### CORRUGATED-STEEL PIPE (CSP)

12"	FT	27.68	+0.7	+3.6
36"	FT	96.65	<b>+0.3</b>	+14.3
60"	FT	211.81	+0.1	+9.3

### POLYETHYLENE PIPE (PE): UNDERDRAIN

4"	FT	1.71	+0.2	+17.0
----	----	------	------	-------

### POLYVINYL-CHLORIDE PIPE (PVC)

Sewer, 4"	FT	3.56	+1.1	-4.7
8"	FT	15.08	-3.2	+0.7
Water, 6"	FT	12.69	+5.1	+30.4
8"	FT	18.51	<b>+2.3</b>	+10.8
12"	FT	38.76	+3.3	+21.4

### DUCTILE-IRON PIPE (DIP)

6"	FT	35.04	-2.5	+6.0
8"	FT	47.79	<b>-1.7</b>	+3.5
12"	FT	75.56	-1.2	+7.1

### COPPER WATER TUBING: TYPE L

1/2"	FT	4.06	+0.9	+6.5
1 1/2"	FT	18.89	+1.9	+18.8

SOURCE: ENR

# CONSTRUCTION ECONOMICS

## Sewer, Water and Drain Pipe For June 2026

City prices reflect quotes from single sources and can be volatile. They are not meant to be the prevailing price for a city. Data are a mix of list and transaction prices and may include ENR estimates. Do not compare prices between locations. Use city information to analyze national trends.

ITEM	UNIT	ATLANTA	BALTIMORE	BIRMINGHAM	BOSTON	CHICAGO	CINCINNATI	CLEVELAND	DALLAS	DENVER	DETROIT
<b>REINFORCED-CONCRETE PIPE (RCP)</b>											
12"	FT	34.25	26.61	41.81	12.94	29.05	+38.76	29	87	41.44	17.6
24"	FT	64.47	59.9	57.51	31.28	71.2	+92	90	141.25	64.23	41.97
36"	FT	130.22	175	131.58	67.47	152.25	+168	145	-258.35	145.04	89.54
48"	FT	198	220.05	231.96	112.92	387.8	+265.2	230	-415.27	233.1	149.73
<b>CORRUGATED-STEEL PIPE (CSP)</b>											
12"	FT	22.26	29	23.25	12.55	35.4	+28.84	22	60.83	41.44	17.6
36"	FT	66.91	127.4	69.83	44.51	127.4	+103	53	201.23	207.20	52.3
60"	FT	148.5	260	153.69	101.62	260	+216.3	165	451.79	227.92	151.29
<b>POLYETHYLENE PIPE (PE): UNDERDRAIN</b>											
4"	FT	1.6	-1.38	0.94	0.9	1.1	1.75	0.68	1.57	3.63	0.77
<b>POLYVINYL-CHLORIDE PIPE (PVC)</b>											
SEWER, 4"	FT	4.11	2.59	2.82	2.99	4.57	+4.08	5.87	6.18	2.08	1.96
8"	FT	17.06	-6.5	8.27	10.5	27.47	+11.3	23.99	15.45	13.83	9.9
WATER, 6"	FT	9.4	+17.4	5.3	6.05	23.03	+18.36	24	11.33	20.46	4.99
8"	FT	17.06	+24.13	8.27	10.5	32.47	+28	23	13.39	30.04	7.99
12"	FT	38.2	+51.4	15.44	24.2	63.01	+49	42	28.84	40.04	14.39
<b>DUCTILE-IRON PIPE (DIP)</b>											
6"	FT	36.41	40.85	-32	-33.5	34.2	34	-42.34	60	29.01	30.75
8"	FT	47.94	57.5	-43	-48	46.4	47	-48.6	80	39.37	18.5
12"	FT	73.84	86	-66	-75	97.87	82	75	135	60.09	60.54
<b>COPPER WATER TUBING: TYPE L</b>											
½"	FT	4.18	4	+4.28	+5.81	3.17	3.5	6.78	4	2.35	2.61
1½"	FT	22.41	14.95	+24.15	+32.76	15.33	15	17.58	19.57	13.18	15.7
ITEM	UNIT	KANSAS CITY	LOS ANGELES	MINNEAPOLIS	NEW ORLEANS	NEW YORK	PHILADELPHIA	PITTSBURGH	ST. LOUIS	SAN FRANCISCO	SEATTLE
<b>REINFORCED-CONCRETE PIPE (RCP)</b>											
12"	FT	18.2	37.95	35.84	32.66	68	50	26.2	33.6	+38.35	26.1
24"	FT	49.28	51.75	66.08	51.66	129	108	59.9	57.75	+79.07	66.6
36"	FT	89.81	105.8	151.2	111.04	248	215	175	81.9	+179.06	142.1
48"	FT	155.31	171.35	281.12	+152	415	345	224.45	152.25	+290.47	237.65
<b>CORRUGATED-STEEL PIPE (CSP)</b>											
12"	FT	15.7	23.93	20.25	+42.3	37	24	29	21	20.82	26.5
36"	FT	57.76	83.65	66.07	+103.5	121	80	127.4	71.4	73.99	95.5
60"	FT	135.82	201.28	161.81	306.94	358	172	173	168	174.29	240
<b>POLYETHYLENE PIPE (PE): UNDERDRAIN</b>											
4"	FT	1.47	1.9	2.09	1.88	3.86	1.3	+1.38	1.58	2.59	1.5
<b>POLYVINYL-CHLORIDE PIPE (PVC)</b>											
SEWER, 4"	FT	1.38	4.89	2.65	4.25	4.85	3.07	2.59	4.2	2.6	2.22
8"	FT	7.38	11.77	11.1	18.47	20.45	8.59	+6.5	12.6	21.67	9.76
WATER, 6"	FT	8.04	11.02	12.49	7.2	15.75	11.63	+17.4	10.5	-13.15	4.55
8"	FT	10.6	17.14	23.44	8.95	24.5	24.96	+24.13	12.6	-20.22	7.11
12"	FT	35.68	30.39	49.54	46	48	44.57	+51.4	33.6	48.49	17.13
<b>DUCTILE-IRON PIPE (DIP)</b>											
6"	FT	26.87	28.04	34.92	51.27	25.12	39.75	43.89	29.4	30.75	32.75
8"	FT	35.38	36.93	49.28	78.35	37.95	58	61.25	37.8	40.51	44
12"	FT	54.21	55.63	81.33	91.52	55.76	69	100.01	56.7	61.00	72.75
<b>COPPER WATER TUBING: TYPE L</b>											
½"	FT	3.47	3.33	5.16	3.64	2.29	4.1	4	5.52	-4.43	4.11
1½"	FT	13.36	13.4	27.12	13.99	26.6	20.4	14.95	12.46	+18.25	22.61

+ OR - DENOTES PRICE HAS RISEN OR FALLEN SINCE PREVIOUS REPORT; QUOTES ARE DELIVERED PRICES. SOME PRICES MAY INCLUDE TAXES OR DISCOUNTS. PRODUCT SPECIFICATION MAY VARY, DEPENDING ON WHAT IS MOST COMMONLY USED OR MOST ACCESSIBLE IN A CITY. QUANTITIES ARE GENERALLY TRUCKLOADS. RCP PIPE IS ASTM C76; 12 IN. AND 24 IN. ARE RUBBER-GASKET JOINTED, OTHERS ARE NON-CORRUGATED. CORRUGATED STEEL PIPE IS PLAIN GALVANIZED; 12 IN. IS 16 GAUGE, 36 IN. IS 12 GAUGE. PE PIPE IS M252, PERFORATED AND CORRUGATED. PVC SEWER PIPE IS ASTM D-3034, SDR-35. PVC WATER PIPE IS C900, CL 150. DIP PIPE IS CL 150 WITH A PUSH-ON JOINT. COPPER WATER TUBING PIPE IS HARD AND INTERIOR DIAMETER, TYPE L.