

## ENR's 20-city average cost indexes, wages and materials prices. Historical data for ENR's 20 cities can be found at [ENR.com/economics](https://enr.com/economics)

### Construction Cost Index

**+2.6%**

ANNUAL INFLATION RATE

APR. 2026

1913=100	INDEX VALUE	MONTH	YEAR
CONSTRUCTION COST	14157.77	0.0%	+2.6%
COMMON LABOR	26554.74	0.0%	+1.3%
WAGE \$/HR.	50.45	0.0%	+1.3%

The Construction Cost Index annual escalation rose 2.6%, while the monthly component showed no change.

### Building Cost Index

**+4.0%**

ANNUAL INFLATION RATE

APR. 2026

1913=100	INDEX VALUE	MONTH	YEAR
BUILDING COST	8803.97	0.0%	+4.0%
SKILLED LABOR	12489.85	0.0%	+2.5%
WAGE \$/HR.	69.32	0.0%	+2.5%

The Building Cost Index was up 4% on an annual basis, while the monthly component held steady.

### Materials Cost Index

**0.0%**

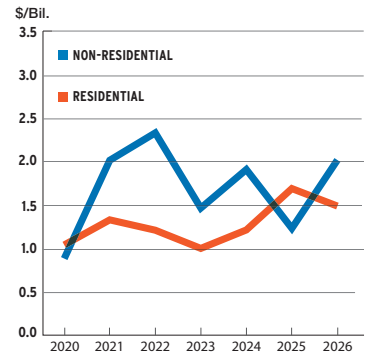
MONTHLY INFLATION RATE

APR. 2026

1913=100	INDEX VALUE	MONTH	YEAR
MATERIALS COST	6559.62	0.0%	+5.9%
CEMENT \$/TON	307.82	+1.6%	+13.0%
STEEL \$/CWT	126.46	+1.2%	+6.8%
LUMBER \$/MBF	848.96	-2.1%	+10.7%

The Materials Cost Index showed no change in April.

**Construction starts in the Pittsburgh metro area are expected to rise 26.8% in 2026, to \$3.7 billion**, according to Dodge Construction Network. Dodge predicts an 80.2% increase in non-residential starts, while residential is expected to fall 12%. Office, education and health care starts are among the sectors predicted to increase.



SOURCE: DODGE CONSTRUCTION NETWORK

## ENR's Cost Indexes by City

1913=100  
1967=100  
R=REVISED

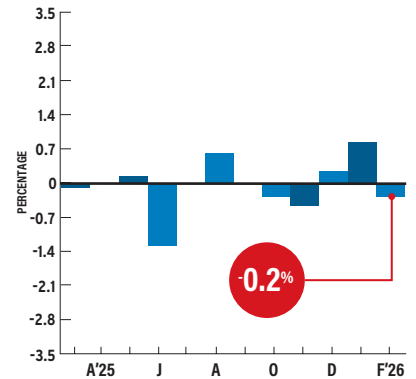
	CONSTRUCTION COST		BUILDING COST		COMMON LABOR		SKILLED LABOR		MATERIALS	
	APR '26: 1913	% CHG. YEAR	APR '26: 1913	% CHG. YEAR	APR '26: 1967	% CHG. YEAR	APR '26: 1967	% CHG. YEAR	APR '26: 1967	% CHG. YEAR
<b>ATLANTA</b>	8730.98	-0.1	6980.32	-0.1	825.83	0.0	829.31	0.0	1569.64	-0.2
<b>BALTIMORE</b>	11313.99	+5.2	8056.10	+7.4	1236.74	0.0	1041.21	0.0	1524.66	+14.4
<b>BIRMINGHAM</b>	9138.38	+2.6	6582.71	+3.6	978.68	0.0	894.48	0.0	1319.12	+6.5
<b>BOSTON</b>	18628.86	+0.6	10718.78	+1.7	1848.09	+0.3	1700.94	+1.5	1375.69	+1.9
<b>CHICAGO</b>	22181.54	+7.2	10950.53	0.0	2030.80	+9.2	1583.08	0.0	1346.80	+0.1
<b>CINCINNATI</b>	12733.94	+1.8	7471.84	+3.8	1180.77	+3.4	1102.61	+9.8	1202.71	-2.1
<b>CLEVELAND</b>	14545.56	+0.6	8026.43	+1.6	1147.66	0.0	1052.09	+1.2	1235.99	+2.2
<b>DALLAS</b>	7863.74	+4.9	6547.76	+6.5	742.23	0.0	761.92	+1.4	1355.26	+9.7
<b>DENVER</b>	9439.97	+2.0	7825.72	+2.8	818.18	0.0	1077.89	+0.8	1362.51	+4.7
<b>DETROIT</b>	13908.12	+2.0	8334.67	+1.9	1125.91	+2.7	1178.73	+3.2	1056.11	0.0
<b>KANSAS CITY</b>	14191.90	+3.1	8498.81	+5.3	1413.02	0.0	1349.22	0.0	1274.16	+11.9
<b>LOS ANGELES</b>	15668.31	-1.9	9423.17	-1.7	1287.67	0.0	1311.05	+3.0	1412.90	-6.9
<b>MINNEAPOLIS</b>	17417.26	+5.3	9506.97	11.4	1638.77	0.0	1529.95	+2.0	1328.61	+26.6
<b>NEW ORLEANS</b>	8087.49	+1.7	6766.33	+2.0	749.82	0.0	870.91	0.0	1393.93	+3.5
<b>NEW YORK CITY</b>	23488.64	+4.4	12646.99	+7.4	1721.88	+1.3	1638.55	+1.6	1493.78	+21.4
<b>PHILADELPHIA</b>	16938.28	+3.5	10040.80	+7.9	1733.73	+1.2	1540.29	+5.5	1425.21	+11.7
<b>PITTSBURGH</b>	<b>13054.99</b>	<b>+4.4</b>	<b>8410.53</b>	<b>+7.6</b>	<b>1178.28</b>	<b>0.0</b>	<b>1125.45</b>	<b>+1.0</b>	<b>1190.99</b>	<b>+16.5</b>
<b>ST. LOUIS</b>	15210.77	+2.3	8869.18	+3.2	1179.98	+1.2	1146.85	+1.5	1518.10	+5.0
<b>SAN FRANCISCO</b>	15318.98	+0.4	10846.92	+0.5	1076.13	0.0	1339.65	0.0	1638.28	+1.1
<b>SEATTLE</b>	15293.63	+0.4	9574.91	+9.0	1314.48	0.0	1534.92	+14.7	1490.07	+1.5

**Prices for PVC pipe products declined 0.2% in February after increasing 0.8% in January**, according to the Bureau of Labor Statistics' producer price index for plastic construction products, which consists largely of PVC pipe. The annual escalation reached 0.9% in February. ENR's 20-city average price for all three types of corrugated-steel pipe experienced yearly increases in April. Monthly prices for 6-in. ductile-iron pipe increased 0.4%, while the annual price rose 9.8% since April 2025.

## PRODUCER PRICE INDEX

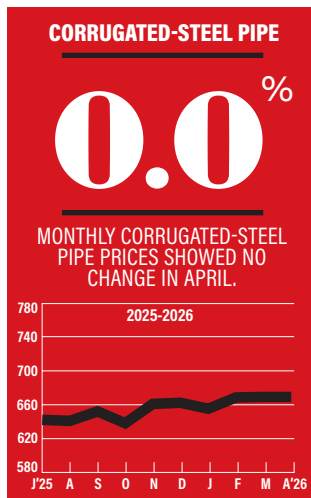
### PVC PIPE

Monthly Percent Change

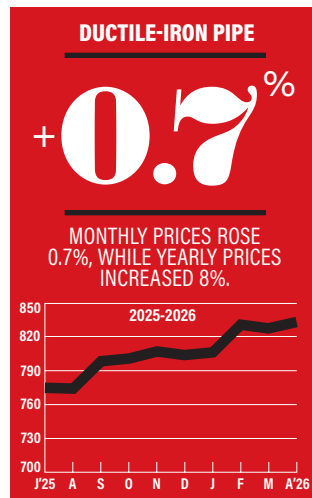


SOURCE: BUREAU OF LABOR STATISTICS

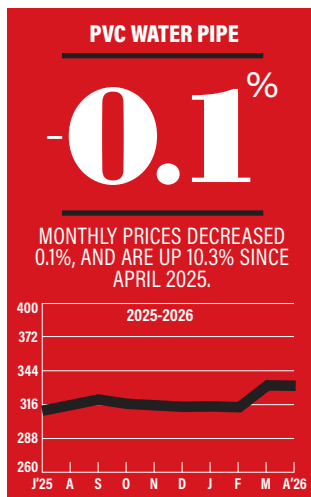
## ENR's Materials Prices For April 2026



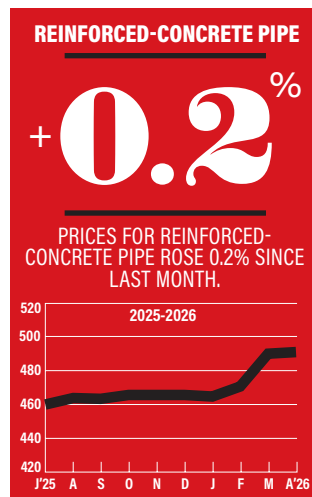
1992=100



1992=100



1992=100



1992=100

## 20-CITY AVERAGE

ITEM UNIT \$PRICE %MONTH %YEAR

### REINFORCED-CONCRETE PIPE (RCP)

12"	FT	36.79	+0.4	+8.9
24"	FT	71.09	<b>+0.2</b>	+12.6
36"	FT	144.29	+0.5	+7.8
48"	FT	231.43	+0.5	+4.3

### CORRUGATED-STEEL PIPE (CSP)

12"	FT	27.06	+0.1	+4.7
36"	FT	90.15	<b>0.0</b>	+8.8
60"	FT	209.87	+0.1	+8.9

### POLYETHYLENE PIPE (PE): UNDERDRAIN

4"	FT	1.69	-0.4	+17.5
----	----	------	------	-------

### POLYVINYL-CHLORIDE PIPE (PVC)

Sewer, 4"	FT	3.42	+1.5	-10.0
8"	FT	15.28	+10.9	+1.2
Water, 6"	FT	12.07	+0.4	+23.9
8"	FT	18.17	<b>-0.1</b>	+10.3
12"	FT	36.88	+0.1	+15.8

### DUCTILE-IRON PIPE (DIP)

6"	FT	35.24	+0.4	+9.8
8"	FT	47.70	<b>+0.7</b>	+8.0
12"	FT	75.24	+0.3	+10.5

### COPPER WATER TUBING: TYPE L

1/2"	FT	3.94	-0.9	+7.2
1 1/2"	FT	18.05	-0.1	+23.1

SOURCE: ENR

## Sewer, Water and Drain Pipe For April 2026

City prices reflect quotes from single sources and can be volatile. They are not meant to be the prevailing price for a city. Data are a mix of list and transaction prices and may include ENR estimates. Do not compare prices between locations. Use city information to analyze national trends.

ITEM	UNIT	ATLANTA	BALTIMORE	BIRMINGHAM	BOSTON	CHICAGO	CINCINNATI	CLEVELAND	DALLAS	DENVER	DETROIT
<b>REINFORCED-CONCRETE PIPE (RCP)</b>											
12"	FT	34.25	26.61	41.81	12.94	29.05	38	+29	87	40	17.6
24"	FT	64.47	59.9	57.51	31.28	71.2	90	-90	141.25	62	41.97
36"	FT	130.22	175	131.58	67.47	152.25	165	+145	264.35	140	89.54
48"	FT	198	220.05	231.96	112.92	387.8	260	230	418.32	225	149.73
<b>CORRUGATED-STEEL PIPE (CSP)</b>											
12"	FT	22.26	29	23.25	12.55	35.4	28	+22	60	35	17.6
36"	FT	66.91	127.4	69.83	44.51	127.4	100	+53	200	90	52.3
60"	FT	148.5	260	153.69	101.62	260	210	+165	450	210	151.29
<b>POLYETHYLENE PIPE (PE): UNDERDRAIN</b>											
4"	FT	1.6	1.49	-0.94	-0.9	1.1	1.75	0.68	1.57	3.5	0.77
<b>POLYVINYL-CHLORIDE PIPE (PVC)</b>											
SEWER, 4"	FT	4.11	2.59	2.13	+2.99	4.57	4	5.87	6.18	2.01	1.96
8"	FT	17.06	14.94	8.75	10.5	27.47	11	+23.99	15.45	13.35	9.9
WATER, 6"	FT	9.4	11.89	4.83	+6.05	23.03	18	+24	11.33	19.75	4.99
8"	FT	17.06	24	8.75	10.5	32.47	27	+23	13.39	29	7.99
12"	FT	38.2	28.52	19.58	24.2	63.01	48	+42	28.84	38.65	14.39
<b>DUCTILE-IRON PIPE (DIP)</b>											
6"	FT	36.41	40.85	33.84	37.14	34.2	34	38.75	60	28	30.75
8"	FT	47.94	57.5	44.09	53.7	46.4	47	57.3	80	38	18.5
12"	FT	73.84	86	70.05	88.63	97.87	82	75	135	58	60.54
<b>COPPER WATER TUBING: TYPE L</b>											
½"	FT	4.18	4	4.57	-5.51	3.17	3.5	6.78	4	2.27	2.61
1½"	FT	22.41	14.95	24.49	+30.26	15.33	15	17.58	19.57	12.72	15.7
ITEM	UNIT	KANSAS CITY	LOS ANGELES	MINNEAPOLIS	NEW ORLEANS	NEW YORK	PHILADELPHIA	PITTSBURGH	ST. LOUIS	SAN FRANCISCO	SEATTLE
<b>REINFORCED-CONCRETE PIPE (RCP)</b>											
12"	FT	17.57	37.95	+35.84	32.66	68	50	26.2	32	53.33	26.1
24"	FT	47.57	51.75	+66.08	51.66	129	108	59.9	55	76.66	+66.6
36"	FT	86.69	105.8	+151.2	111.04	248	215	175	78	112.50	+142.1
48"	FT	149.91	171.35	+281.12	149.16	415	345	224.45	145	176.25	+237.65
<b>CORRUGATED-STEEL PIPE (CSP)</b>											
12"	FT	15.15	23.93	20.25	39.53	37	24	29	20	20.82	26.5
36"	FT	55.75	83.65	66.07	100.22	121	80	127.4	68	73.99	95.5
60"	FT	131.1	201.28	161.81	306.94	358	172	173	160	174.29	240
<b>POLYETHYLENE PIPE (PE): UNDERDRAIN</b>											
4"	FT	1.42	1.9	2.09	+1.88	3.86	1.3	1.2	1.5	2.59	1.5
<b>POLYVINYL-CHLORIDE PIPE (PVC)</b>											
SEWER, 4"	FT	1.33	4.89	2.65	4.25	3.79	3.07	2.59	4	2.6	2.22
8"	FT	7.12	11.77	11.1	18.47	15.24	8.59	7.55	12	21.67	9.76
WATER, 6"	FT	7.76	11.02	12.49	6.9	15.75	9.33	11.89	10	17.73	4.55
8"	FT	10.23	17.14	23.44	8.65	24.5	22.85	18.78	12	25.61	-7.11
12"	FT	34.44	30.39	49.54	45.6	48	32.06	54.64	32	48.49	+17.13
<b>DUCTILE-IRON PIPE (DIP)</b>											
6"	FT	25.94	28.04	34.92	+51.27	25.12	30.11	43.89	28	30.75	32.75
8"	FT	34.15	36.93	49.28	+78.35	37.95	45.17	61.25	36	40.51	44
12"	FT	52.33	55.63	81.33	+91.52	55.76	53.44	100.01	54	61.00	72.75
<b>COPPER WATER TUBING: TYPE L</b>											
½"	FT	3.35	3.33	5.16	3.64	2.29	2.75	4	5.26	4.75	-4.11
1½"	FT	12.9	13.4	27.12	13.99	+24.15	15.19	14.95	11.87	17.71	+22.61

+ DR - DENOTES PRICE HAS RISEN OR FALLEN SINCE PREVIOUS REPORT; QUOTES ARE DELIVERED PRICES. SOME PRICES MAY INCLUDE TAXES OR DISCOUNTS. PRODUCT SPECIFICATION MAY VARY, DEPENDING ON WHAT IS MOST COMMONLY USED OR MOST ACCESSIBLE IN A CITY. QUANTITIES ARE GENERALLY TRUCKLOADS. RCP PIPE IS ASTM C76; 12 IN. AND 24 IN. ARE RUBBER-GASKET JOINTED, OTHERS ARE NON-CORRUGATED. CORRUGATED STEEL PIPE IS PLAIN GALVANIZED; 12 IN. IS 16 GAUGE, 36 IN. IS 14 GAUGE, 60 IN. IS 12 GAUGE. PE PIPE IS M252, PERFORATED AND CORRUGATED. PVC SEWER PIPE IS ASTM D-3034, SDR-35. PVC WATER PIPE IS C900, CL 150. DIP PIPE IS CL 150 WITH A PUSH-ON JOINT. COPPER WATER TUBING PIPE IS HARD AND INTERIOR DIAMETER, TYPE L.