

ENR's 20-city average cost indexes, wages and materials prices. Historical data for ENR's 20 cities can be found at [ENR.com/economics](https://enr.com/economics)

Construction Cost Index

+2.7%

ANNUAL INFLATION RATE

MAR. 2026

1913=100	INDEX VALUE	MONTH	YEAR
CONSTRUCTION COST	14156.75	+0.2%	+2.7%
COMMON LABOR	26554.74	0.0%	+1.5%
WAGE \$/HR.	50.45	0.0%	+1.5%

The Construction Cost Index annual escalation rose 2.7%, while the monthly component increased 0.2%.

Building Cost Index

+4.3%

ANNUAL INFLATION RATE

MAR. 2026

1913=100	INDEX VALUE	MONTH	YEAR
BUILDING COST	8802.97	+0.3%	+4.3%
SKILLED LABOR	12489.85	0.0%	+3.1%
WAGE \$/HR.	69.32	0.0%	+3.1%

The Building Cost Index was up 4.3% on an annual basis, while the monthly component rose 0.3%.

Materials Cost Index

+0.6%

MONTHLY INFLATION RATE

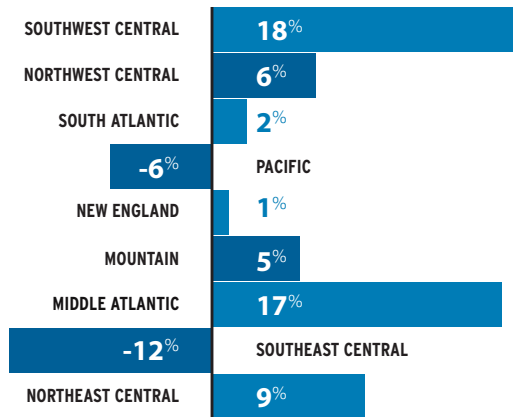
MAR. 2026

1913=100	INDEX VALUE	MONTH	YEAR
MATERIALS COST	6557.98	+0.6%	+5.8%
CEMENT \$/TON	303.10	-0.5%	+10.7%
STEEL \$/CWT	125.01	+2.6%	+6.2%
LUMBER \$/MBF	867.46	-0.5%	+11.4%

The Materials Cost Index increased 0.6% in March.

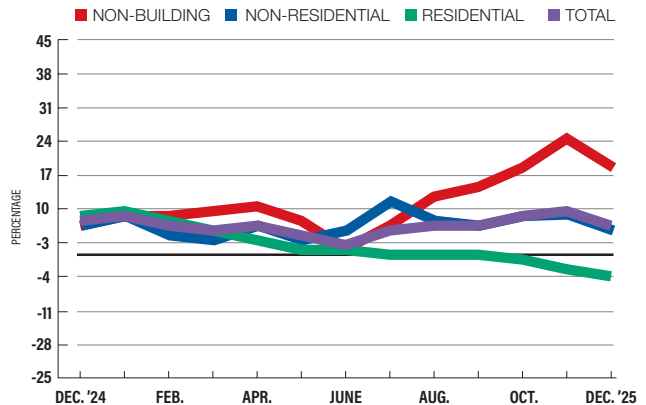
Construction Starts Regional growth trends vs. national growth trends

MIDDLE ATLANTIC STARTS UP 17%



SOURCE: DODGE CONSTRUCTION NETWORK. YEAR-TO-YEAR PERCENT CHANGE IN VALUE OF TOTAL PROJECTS STARTED JUNE 2024 FOR 12-MONTH ROLLING TOTALS.

RESIDENTIAL STARTS DECLINE



SOURCE: DODGE CONSTRUCTION NETWORK. YEAR-TO-YEAR PERCENT CHANGE FOR 12-MONTH ROLLING NATIONAL TOTAL STARTS.

In November, the total dollar value of new construction starts in Maryland was 46.1% above the previous year's level, according to Dodge Construction Network. Residential sector starts fell 11.9%, while non-residential starts increased 61.3%. Non-building starts increased 89.3% in the same period.

MARYLAND CONSTRUCTION STARTS: \$/MIL.	2025 NOV.	2025 OCT.	2024 NOV.	% CHG. MONTH	% CHG. YEAR
TOTAL CONSTRUCTION	20,104,847	19,854,875	13,760,917	+1.3	+46.1
NON-RESIDENTIAL	7,586,730	7,097,897	4,703,360	+6.9	+61.3
STORES, SHOPPING CENTERS	258,448	264,777	252,556	-2.4	+2.3
OFFICE, BANK BUILDINGS	2,136,000	2,009,395	706,463	+6.3	+202.4
HOTELS, MOTELS	75,595	75,595	9,659	0.0	+682.6
OTHER COMMERCIAL	1,006,638	982,575	680,534	+2.4	+47.9
MANUFACTURING BUILDINGS	380,029	379,159	51,907	+0.2	+632.1
EDUCATIONAL BUILDINGS	2,460,965	2,152,489	2,043,954	+14.3	+20.4
HEALTH CARE FACILITIES	756,904	749,399	254,866	+1.0	+197.0
OTHER INSTITUTIONAL	512,151	484,508	703,421	+5.7	-27.2
RESIDENTIAL	4,033,050	4,194,539	4,575,824	-3.8	-11.9
NON-BUILDING	8,485,067	8,562,439	4,481,733	-0.9	+89.3
HIGHWAYS, BRIDGES	1,200,688	1,211,710	1,806,843	-0.9	-33.5
ENVIRONMENTAL PUBLIC WORKS	820,243	884,282	1,160,296	-7.2	-29.3
POWER, UTILITIES	484,528	476,136	375,743	+1.8	+29.0

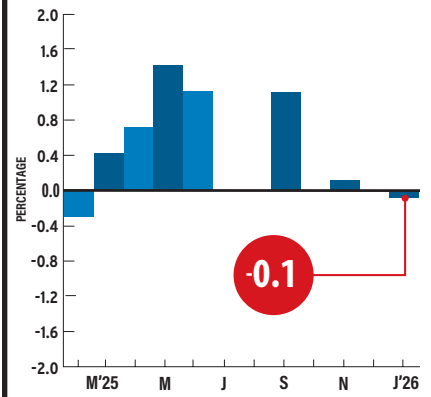
SOURCE: DODGE CONSTRUCTION NETWORK STARTS. TOTALS MAY NOT ADD UP DUE TO EXCLUSION OF OTHER CATEGORIES. 12-MONTH ROLLING TOTALS FOR MARYLAND.

The price of sheet metal fell 0.1% in January after showing no change in December, according to the Bureau of Labor Statistics' Producer Price Index. The annual index sits at 5.5% in January. ENR's 20-city average monthly price for hot-rolled carbon-steel plate rose 3.1% in March, while yearly prices are up 23.8%. Prices for all types of stainless-steel sheet experienced both monthly and yearly increases in March, according to ENR's data. Monthly prices for reinforcing bars rose 3.6%, while yearly prices are up 11.9%.

PRODUCER PRICE INDEX

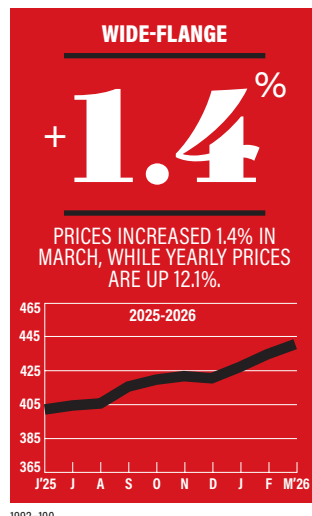
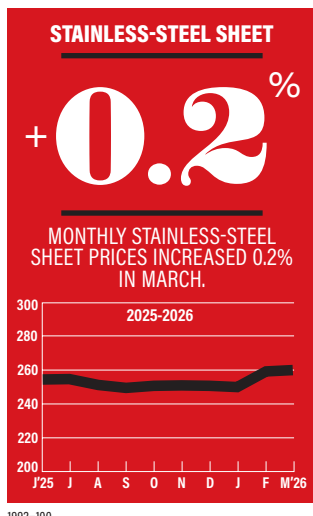
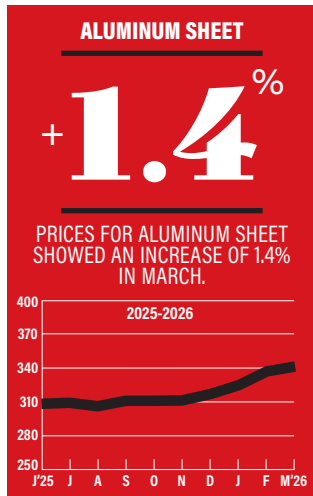
SHEET METAL

Monthly Percent Change



SOURCE: BUREAU OF LABOR STATISTICS

ENR's Materials Prices For March 2026



20-CITY AVERAGE

ITEM	UNIT	\$PRICE	%MONTH	%YEAR
STANDARD STRUCTURAL SHAPES				
Average	CWT	126.46	+1.2	+6.8
Channel beams, 6" Deep, 8.2 LB/LF	CWT	108.14	+0.8	+2.4
I-beams, 6" Deep, 12.5 LB/LF	CWT	142.46	+0.8	+5.8
Wide-flange, 8" Deep, 31 LB/LF	CWT	128.79	+1.4	+12.1
REINFORCING BARS				
Grade 60, No. 4	CWT	75.99	+3.6	+11.9
HOT-ROLLED CARBON-STEEL PLATE				
12 gauge, 48" x 10'	CWT	121.51	+3.1	+23.8
ALUMINUM SHEET				
3003H14, 36" x 96"	CWT	429.53	+1.4	+28.6
STAINLESS-STEEL SHEET				
14 gauge	CWT	363.21	+0.2	+10.5
16 gauge	CWT	359.08	+0.2	+11.3
20 gauge	CWT	369.22	+0.2	+12.2
STAINLESS-STEEL PLATE				
304, 1/4", 72" x 240"	CWT	385.83	+0.4	+12.8
316, 1/4", 96" x 140"	CWT	534.23	+0.5	+16.1
STEEL PILING (H-PILE)				
HP10 x 42	CWT	108.98	-0.6	+13.6

SOURCE: ENR

PLATTS* STEEL SPOT MARKET PRICES: FEB. 2026

Reinforcing bar, No. 5	TON	945.00	+1.3	+20.6
Plate	TON	1092.63	+4.3	+14.1
Hot-rolled coil	TON	973.95	+3.0	+20.8

SOURCE: *PLATTS S&P GLOBAL REBAR SOUTHERN U.S.; PLATE PRICES U.S. SOUTHEAST AVERAGE; HOT-ROLLED COIL PRICES INDIANA.

Structural Steel, Rebar, Building Sheet, Piling For March 2026

City prices reflect quotes from single sources and can be volatile. They are not meant to be the prevailing price for a city. Data are a mix of list and transaction prices and may include ENR estimates. Do not compare prices between locations. Use city information to analyze national trends.

ITEM	UNIT	ATLANTA	BALTIMORE	BIRMINGHAM	BOSTON	CHICAGO	CINCINNATI	CLEVELAND	DALLAS	DENVER	DETROIT
STANDARD STRUCTURAL SHAPES											
AVERAGE	CWT	137	100.57	70.73	117.51	189.31	72.5	-64.7	156.66	+111.7	85.08
CHANNEL BEAMS, 6" DEEP, 8.2 LB/LF	CWT	121.95	86.41	58.75	87.34	168.26	59.2	69.1	111	76.32	85.18
I-BEAMS, 6" DEEP, 12.5 LB/LF	CWT	156	115	80.95	139.43	215.25	91.2	-60	225	+139.61	85.05
WIDE-FLANGE, 8" DEEP, 31 LB/LF	CWT	133.06	100.3	72.5	125.77	184.32	67.1	-65	133.99	119.17	85.01
REINFORCING BARS											
GRADE 60, No. 4	CWT	90.12	67.35	75	64.11	66.24	+102	58.5	75	94.06	56.06
HOT-ROLLED CARBON-STEEL PLATE											
12 GAUGE, 48" x 10'	CWT	88.57	84	85	123.48	95.21	+122	58.14	208	70.15	205.43
BUILDING SHEET AND PLATE											
ALUM. SHEET, 3003H14, 36" x 96"	CWT	378.71	370.36	466.66	395.84	179.52	+340	258	610	338.18	298.26
STAINLESS-STEEL SHEET											
14 GAUGE	CWT	223.99	384	283.96	352.64	678	285	298	315	256.39	303.76
16 GAUGE	CWT	225.33	339.04	283.95	352.78	712	174	301	365.25	251.25	305.29
20 GAUGE	CWT	229.3	361.88	290.62	383.99	552	181	310	+510	219.66	299.01
STAINLESS-STEEL PLATE											
304, 1/4", 72" x 240"	CWT	254.29	356.34	459.99	486.15	498	182.5	184	+571.2	240.35	362.87
316, 1/4", 96" x 140"	CWT	378.06	535.04	523.44	520.86	623	451	453	+581.4	+707.25	379.98
STEEL PILING: H-PILE											
HP10 x 42	CWT	81.9	95	71.76	106	216	70	91.98	+202.98	+102	80

ITEM	UNIT	KANSAS CITY	LOS ANGELES	MINNEAPOLIS	NEW ORLEANS	NEW YORK	PHILADELPHIA	PITTSBURGH	ST. LOUIS	SAN FRANCISCO	SEATTLE
STANDARD STRUCTURAL SHAPES											
AVERAGE	CWT	+129.7	210	101.67	+141.33	152.33	119.33	100.57	183.57	155.67	+129.33
CHANNEL BEAMS, 6" DEEP, 8.2 LB/LF	CWT	+139.6	210	85	+124.95	125	105	86.41	152.31	130	+81
I-BEAMS, 6" DEEP, 12.5 LB/LF	CWT	+135.71	210	125	+139.13	170	132	115	186.78	173	+155
WIDE-FLANGE, 8" DEEP, 31 LB/LF	CWT	+113.8	210	95	+159.92	162	121	100.3	211.62	164	+152
REINFORCING BARS											
GRADE 60, No. 4	CWT	+97.24	72.19	68.4	86.2	63.49	70	67.35	120.33	62	64.15
HOT-ROLLED CARBON-STEEL PLATE											
12 GAUGE, 48" x 10'	CWT	+124.72	230	80	81	152	192	84	113.46	160	+73
BUILDING SHEET AND PLATE											
ALUM. SHEET, 3003H14, 36" x 96"	CWT	+624.55	450	339.14	+395.45	515	500	370.36	335.71	1021.94	-403
STAINLESS-STEEL SHEET											
14 GAUGE	CWT	437.77	580	354	386.27	+372	258	384	469.88	430.5	+205
16 GAUGE	CWT	468.38	580	357	371.2	+361	288	339.04	508.37	391.68	+207
20 GAUGE	CWT	510.87	580	365.9	375.15	345	295	361.88	475.32	524.79	+213
STAINLESS-STEEL PLATE											
304, 1/4", 72" x 240"	CWT	423.68	595	321	315.26	585	405	365.34	328.37	516.35	+266
316, 1/4", 96" x 140"	CWT	548.8	595	300	298.5	625	478	535.04	742.89	904.27	-504
STEEL PILING: H-PILE											
HP10 x 42	CWT	110.32	76.5	-92	155	92	94	95	141.4	102	95

+ OR - DENOTES PRICE HAS RISEN OR FALLEN SINCE PREVIOUS REPORT. ALL PRICES ARE FOR WAREHOUSE OR CITY. STAINLESS-STEEL SHEET PRICES ARE FOR TYPE 304, 2B FINISH, 48 X 120-IN. STEEL PILES ARE HIGH-STRENGTH A572. SOME PRICES MAY INCLUDE TAXES OR DISCOUNTS. PRODUCT SPECIFICATIONS MAY VARY DEPENDING ON WHAT IS MOST COMMONLY USED OR MOST ACCESSIBLE IN A CITY. QUANTITIES ARE GENERALLY TRUCKLOADS.